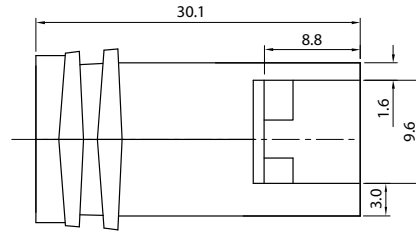
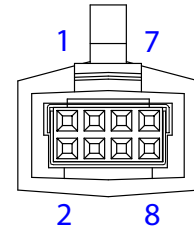
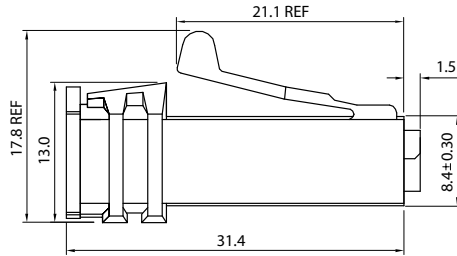
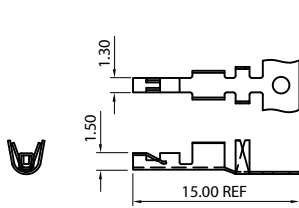


REVISIONS		
REV	DESCRIPTION	DATE
A	RELEASE FOR QUOTE	10/2006



KEY POSITION 2

Note:  
 1. All materials conform to EN Directive 2002/95/EC for RoHS compliance.  
 Electrical Characteristics:  
 Contact Resistance: Terminal 25mΩ Max. and ground terminal 8mΩ Max.  
 Insulation Resistance: 100MΩ Min. at 500V DC.  
 Dielectric Strength: 750V AC/1 minute.  
 Insertion Force: 5.9kgf Max.  
 Withdrawal Force: 1.59 ~ 5.9 kgf  
 Latch Retention: 9.07 kgf Min.

UNLESS OTHERWISE SPEC'D DIM. ARE IN MILLIMETER. TOL. ARE: FRACTION DECIMAL ANGULAR ± ± .XX ± .XXX 1/2"			THIRD ANGLE PROJECTION			<b>CONQUEST TECHNOLOGY LIMITED</b>			
MATERIAL			APPROVALS	DATE		8 Pin Powered USB, 2x4, 24V, 6.5mm Cable, Pebble Grey - RoHS			
FINISH		DRAWN A. PEREZ	10/30/06	SIZE A	DWG. NO. 371011		REV A		
DO NOT SCALE DRAWING				SCALE: N/A	SHEET 1 OF 1				