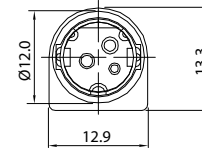
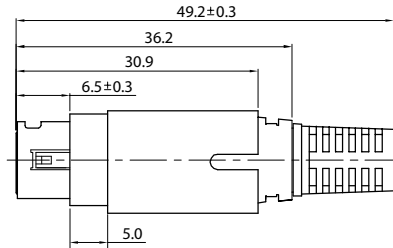
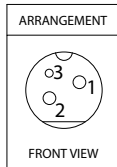
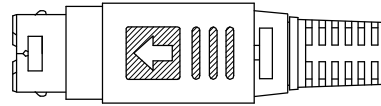




REVISIONS		
REV	DESCRIPTION	DATE
A	RELEASE FOR QUOTE	10/2006



REAR VIEW

All materials conform to EN Directive 2002/95/EC for RoHS Compliance.

SPECIFICATIONS:

- 1. Rating: PIN 1 & 2: 20V DC 7.5A Max.
PIN 3: 20V DC 1A Max.
- 2. Contact Resistance: 30mΩ Max.
- 3. Insulation Resistance: 50mΩ Min. at 250V DC
- 4. Dielectric Strength: 250V AC / 1 minute.
- 5. Applicable wire size: PIN 1 & 2: AWG 18 Max.
PIN 3: AWG 24 Max.

UNLESS OTHERWISE SPEC'D DIM. ARE IN MILLIMETER. TOL. ARE: FRACTION DECIMAL ANGULAR ± ± .008 1/2°			THIRD ANGLE PROJECTION			CONQUEST TECHNOLOGY LIMITED			
MATERIAL			APPROVALS	DATE		3 Pin Power Mini-Din Plug, Black - RoHS For 6.5mm Cable		DWG. NO.	371150
FINISH		DRAWN	Kidman	10/05/06	SCALE	N/A	SHEET	1 OF 1	
DO NOT SCALE DRAWING									